



**Do Water 'Flowforms' Reveal the Pure Electrical Geometry of ... What is LIFE?  
 Golden Ratio in Water and Bio Geometry - Compresses Spin and Charge Constructively  
 - Creating Ordered Laminar Layering and Charge Coherence - and Essentially LIFE ITSELF?**

Flowforms are a good example of using self similarity to self sort both pressure & voltage waves in water. This creates internal coherence: 'harmony in the water'. Does perfecting constructive wave interference in water - electrically create life itself? Water may teach us the essential PRINCIPLE of life:

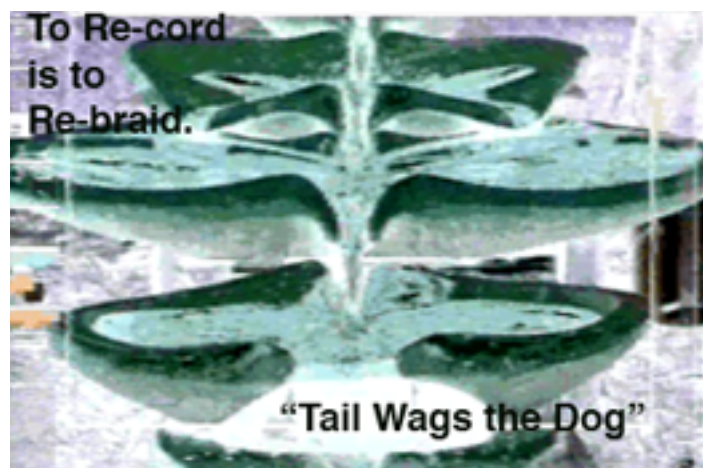
**Perfect Charge Compression = Perfect Charge Distribution = LIFE & Self Organization?**

'Flowform' research in Scandanavia ('VirbelaFlowforms') and elsewhere suggests some profound information about how water can serve life electrically. Flowforms have recently been reported to measurably cause water to get colder as it flows down the dishes. Since heat is destructive wave interference- then by measurably creating cooling - this indicates that the flowform creates - perfected **constructive** wave patterns.

The Norway group - measured the famous 'SEVENFOLD' Flowform - which has been reported to positively effect seed germination efficiency and surface tension changes in water. They also have measured INCREASE in specific gravity in water - which passes thru 'Flowforms'. This became dramatically evident in the 'SevenFold' Flowform at my farm - where the water changed so much that it became impossible to sink. Objects like bodies which could normally sink - would in fact float. This is because the specific gravity is the **density of the water: more spin!** (People floated better in our FlowForm water - but we did not walk on water!). The molecular density is also evidence of increase in charge density- which is our point.

They found that the Golden Mean Ratio might be the key to the Flowform's success. The adjacent dishes were each carefully engineered to BEAT like the vortex in a heartbeat. Not only were the adjacent dishes physically in Golden Mean ratio proportion by size and geometry - but also the RATE at which the dishes beat in ratio to the next was also in Golden Mean FREQUENCY ratio.

If we look at the physics of what the Golden Mean does - we see that in hydrodynamics it is called 'optimized translation of vorticity'. This means that it is nature's best way of taking inertia from long waves down into short. This is similar to the function of Golden Mean ratio - in all plant branching called PHYLLOTAXIS. This means that the perfect ratio of UNPACKING or BRANCHING in all the plant kingdom is built upon Golden Mean. By setting up the geometry for PERFECT UNPACKING in all biology, nature had set up the geometry for PERFECT PACKING - or PERFECT CONSTRUCTIVE COMPRESSION. This article proposes that the pure electrical principle of creating life force is exactly this- the principle of creating perfect CONSTRUCTIVE COMPRESSION!



**Is LIFE Itself- the perfect CHARGE DISTRIBUTION -**  
**That Results From Fractal (+Implosive) Charge Compression???**  
**the PRINCIPLE in the Symmetry of Compression - for Water and Charge.**

from Dan Winter and Valerie Sandelin -Dec. 2005 -published by Implosion Group.

Knowing what LIFE is electrically - may be a LIFE or DEATH question for our genepool's survival. If we look at the often decaying core of cities on planet Earth - where compression is DEFINITELY NOT non-destructive - we might agree that humans have lost the thread of what LIFE is. Most cities from above are visually identical to cancer tissue. (Film: 'Global Brain' by Peter Russell). Interesting that in Albert Szent Gyorgyi's Nobel Winning work: 'Electronic Biology and CANCER' - he concludes that it is indeed the amount of order in the living water inside the cell - that largely distinguishes healthy cells from the cancerous. Chemists know this as the 'triplet state electron' - geometry among water molecules VERY good at DISTRIBUTING CHARGE. We are going to see more about how perfecting CHARGE DISTRIBUTION may be the key to unlocking the mystery of LIFE (and perhaps consciousness or electrical 'self-organization' itself).

Finding a simple and compelling answer to the question of WHAT IS LIFE - satisfying both to electricians and children - may be as simple as examining the structure of WATER in a SEED.

A seed participates in a rather life or death drama at the moment it decides whether to germinate or die. In the simplest of terms, most biologists would probably agree - that the mechanical answer to the question of whether a seed comes to LIFE or dies- happens at the moment of germination. If we look at the germination process in the most gross and basic of terms, again biologists would probably have to agree that LIFE OR DEATH at that moment - is largely determined by WHETHER THE SEED HAS DEVELOPED THE POWER TO STEER OR ORIENT THE ANGLE OF APPROACHING WATER MOLECULES.

This is because - structured water - all agree- is key to cell metabolism and life. And structured water - holds trace minerals in bonded 'tow' - which are the FOOD to make a seed germinate. SO - if a seed can crank up the electrical power to steer in the approaching water molecules laden with FOOD - THEN we have the miracle of germination. If not - then we have - death.

So - where does this electrical power come from ? The POWER - (Watts, torq, volts,) to germinate.

If we talk with the chemists - they are going to get into rather strange discussions about whether the water molecule being walked in to the germinating seed is IN A TRACTOR BEAM - composed of inductance, magnetics, RF, microwave. My goodness - physics has so many names for different field effects no wonder our kids get confused. We have the ionic bond, we have the co-valent bond. One is for small families and short waves the other is for long.

And YET- according to Einstein - and every spiritual tradition of Earth - the Universe is made of only a single contiguous unified field. So if that is so - and this author empatically agrees- THEN - why do we need so many names for the same substance. So it may be soothing to realize that if you really push the scientist you are interviewing about all the names ( magnetic, inductive, capacitive coupling .. etc. etc.) he will ultimately agree that these are all names for the SYMMETRY OF CHARGE.

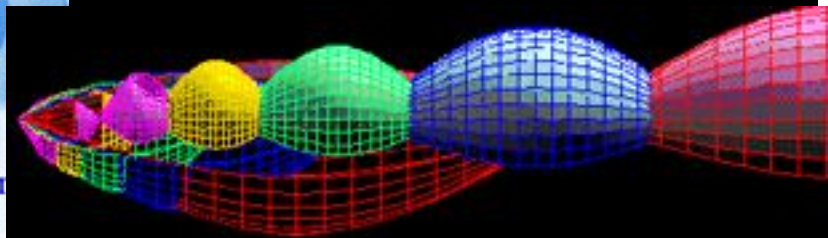
Unified Field Science & Major Religions Agree -

The Universe is Made  
of A Single Unified Substance..

The Real  
Unified Field  
(Spirit, Chi, Orgone)  
is  
CHARGE  
COMPRESSION  
-> In Physics  
This is How  
Matter  
(& Life?)  
are Created!

Sometimes Thought of As Ether  
or 'Zero Point' Background Energy.

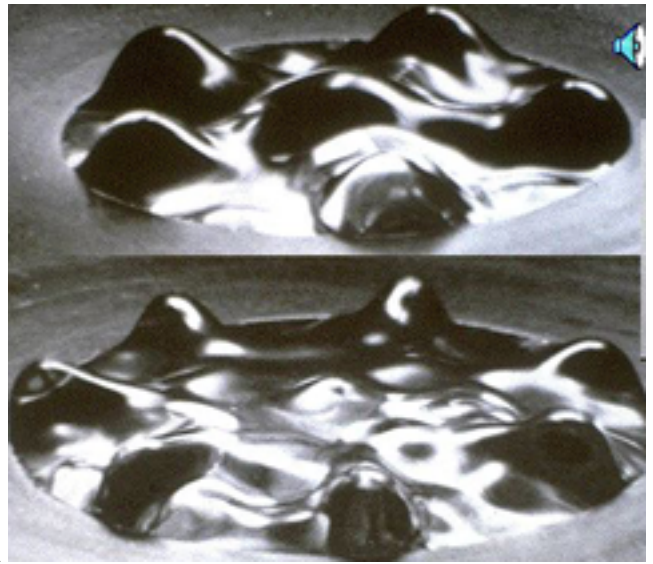
The COMPRESSIBILITY of this Universal Substance  
Causes Waves to Form ..





This Universal Medium or 'Ether'  
is a Compressible Fluid Like Substance  
Which By Storing 'INERTIA' ..Like Waves in Jello  
- Becomes - Electrons, Photons, Atoms, Molecules,  
People, Galaxies etc ...

*"Standing Waves: Physics unified field is the sacred geometry of standing waves. They arrange themselves into the nested platonic geometries - here illustrated by sound waves standing in liquid - which in 3D become - electron shells - and nuclear hadrons (particles)."*



SO - we might be getting close to our universal solvent 'grail' for all these names - in the word CHARGE. It appears to be about as close to SPIRITUAL in trying to name the ONE SUBSTANCE that is the UNIFIED FIELD - as physics gets. In other words- it is likely that the word CHARGE is the closest word science has for .. CHI, ORGONE, BARRAKAH, FRESHNESS, LIFE FORCE, CHAKTIPAT, ECK, ETHER, PRANA, ELAN VITAL.

What a Tower of Babel. The SYMMETRY OF CHARGE - to make matter - is all you have to understand to become the complete physicist - (and di'VINE'- in the process)? Physics says that COMPRESSED CHARGE - stores the INERTIA which they label MASS. Therefore - Divinity or the CREATOR (hopefully you) is the person who knows how to COMPRESS CHARGE.

Rotation which stands in one place BECAUSE of COMPRESSION is the only source of INERTIA. Remember the old joke: There are only TWO kinds of MATTER: 1. Matter - AND - 2. DOESN'T MATTER. SO - since inertia is the only measure and definition physics has come up with for matter - and rotation is the only way to get mass (and time by the way). THEN (by strict logical law) - if it doesn't rotate - IT DOESN'T MATTER.! Kind of turns you around doesn't it.

To be empowered we need to visualize this universal substrate of CHARGE upon whose weft and woof all mass and universe is woven by rotation. One need only be able to visualize (and hopefully FEEL inside)- the way compression waves would travel in a mushy compressible jello. Once you get the trick of sending a compression wave going in a circle by making the wave length fit in even multiples into the circumference (called 'quantum mechanics') you notice one more problem. The gyroscope of inertia (mass and creation itself) you make by sending your wave in a circle - won't stand in one place if there is not something SUCK-ING IT TO ONE CENTER. (Yeats: "In a widening gyre with a center that will not hold")

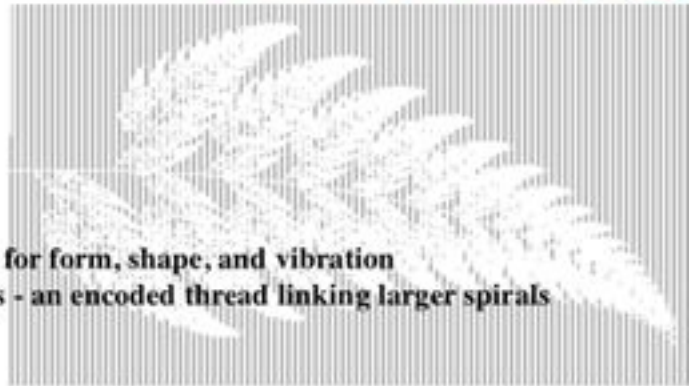
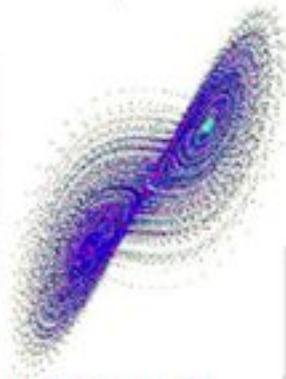
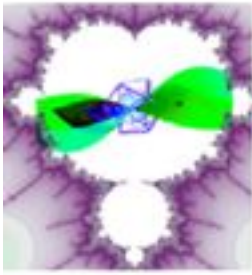
The problem of how to generate this CENTERING FORCE is central to the problem of MAKING GRAVITY, MAKING LIFE, AND - holding the gyroscopic inertia called MASS from being 'pushed around' (avoiding 'pole shift'). . . PERFECT COMPRESSION - is KEY to understand how CHARGE MAKES CENTERING FORCE! (Think: CENTRIPEDAL). - Why are we getting in to all these basic metaphors in order to understand LIFE IN A SEED? Well - we are needing to look at what is the SOURCE of the electric power a seed cooks up to enable it to germinate ( by electrically tractoring in the water molecule.)

Whether we call the field effect sent out by the happy seed - inductive or magnetic or capacitive - AC or DC - Hi Frequency or not (likely it is ALL of the above) - at LEAST science can probably agree that the correct word for what the seed radiates is SYMMETRY OF CHARGE. Of course physics says EVERY THING is SYMMETRY FOR CHARGE. At least we get to unify things a bit.

SO - the seed is radiating CHARGE. If it radiates that - then it is alive. If not - no charge radiance (no water steering tool) then we call it DEAD.

So - what allows the seed to radiate charge - to enjoy being called LIFE? Well - somehow the charge must get in there. Who packs it away - ready to unpack? Answers like God or nature - while metaphoric are highly unsatisfying to curious children and electricians too.

# What is Self-Similarity.. Self Embedding



## What IS a Fractal Attractor? -

Fractals provide a wave 'massage' path for form, shape, and vibration into higher and higher evolving patterns - an encoded thread linking larger spirals into smaller spirals and on to infinity.

Self-similarity means the inner structure has the same pattern as the outer structure.

Examples of natural shapes which tend to be fractal or 'self-similar':

a pine cone, or a fern tree, or a pineal gland - have a shape that - in 3D -

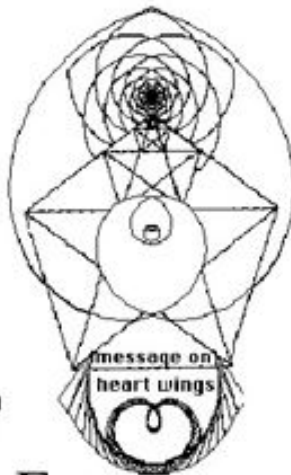
you could begin zooming down into center - and still ALWAYS be seeing the same thing!

Think of the classic Russian Dolls - where they all are shaped so that the whole family of doll - fit perfectly one inside the other. (An onion is another example of a potentially 3D fractal).



The Pentacle Dodecanest Fractal Harmonic Series

is Massaged to Life like Ariadne's umbilical Cord, by the Frequency Signature of the Heartbeat, in the Moment of Love.



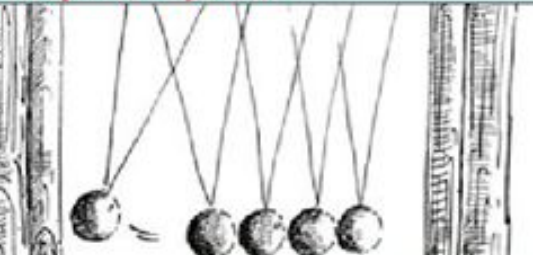
Evil = Failure to EmBED

DNA, Earthgrid, and Zodiac are Dodecahedra, their Common 'Golden Mean' transmission call letter, is the Merkabbah Vehicle linking them.

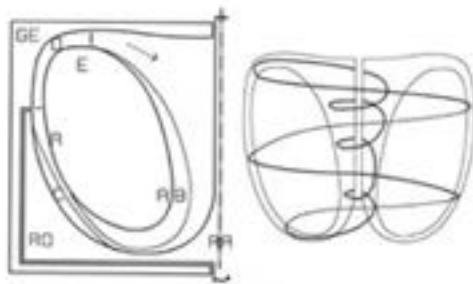


*This planar view of the stellations of each face to the Dodec in the 3D fractal nest - (Poincare symmetry defining Gravity) - reveal the infinite non-destructive compression - Each wave node in the 3D nest - has x,y&z coordinates - Each numerically only a multiple of PHI. This PERFECT COMPRESSION - creates also the Potentially perfected CHARGE DISTRIBUTION (superconductivity, gravity making, and superluminal speeds) - Of DNA.*

LIFE : is the skill to Enter Charge Compression (Fractality) - Because that Creates PERFECT CHARGE DISTRIBUTION .. Which is- "Locked In"=Rapt(ure) The Definition of Conscious Awareness..

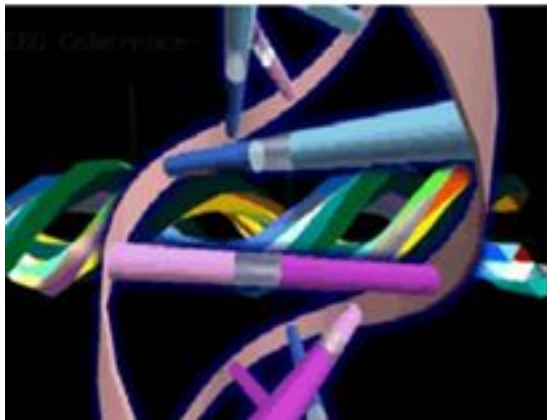






Schauberger's cold implosion

Schauberger knew the REASON:  
 His piezoelectrically (clay mineral)  
 doped Water Vortex EGG  
 was about to begin  
**GENERATING VOLTAGE**  
 from GRAVITY –  
 when it began  
 “spontaneously” getting COLDER  
 (heat is only a word for the opposite  
 of non-destructive compression).



The REASON –  
 was Phi / Golden Ratio  
 Recursion Symmetry in the  
 (Charge) Vortex ...  
**IMPLOSION**

James DeMeo's "Ogone Lab-

[www.orgonelab.org](http://www.orgonelab.org)

Successfully measures the effect of  
 focused (recursive) charge compression  
 On Seed Germination..

Calling **self similar compression of  
 capacitive charge** the word: ORGONE  
 was probably a mistake since assuming  
 the unified field is not unified alienates  
 science and - discourages measurement.



Results from one  
 experiment on orgone-  
 charging of sprouting  
 seeds. A highly-controlled  
 experimental protocol, with  
 carefully monitored and  
 equalized temperature  
 controls, was run over 3  
 years at OBRL, yielding  
 systematically-  
 reproducible and highly  
 significant effects, with an  
 average of 34% increase in  
 growth lengths (with  
 $p < .0001$ ), plus 1.6%  
 increases in germination  
 and 8.6% increases in  
 overall weight.

Photo Copyright 1996 ©  
 by James DeMeo.  
 All Rights Reserved



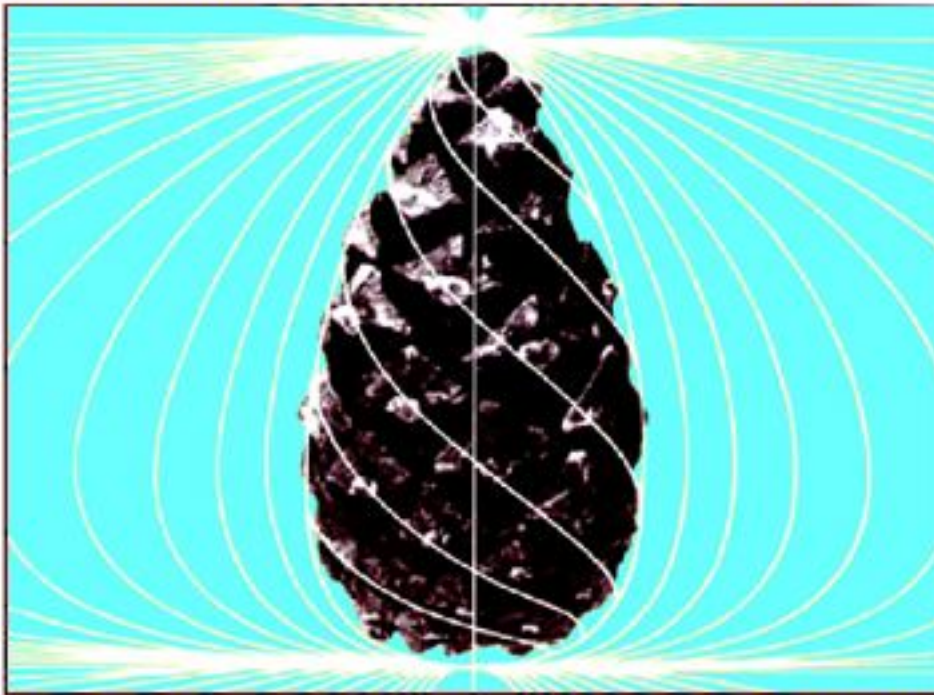
## Implosion Paths for 'Charge' seen in the 'Projective Geometry'

Around a pine cone - adapted from "Vortex of Life"

by Lawrence Edwards..

The principle of perfect braiding, or 'pining away' is the steering of flow to a universal meeting or fusion or implosion point.

Electric Charge Symmetry Path Defining The Projective Geometry "Etheric" Formative Forces..



This is the source of the DC Voltage measurable in an egg or pine cone which quantifies life force. (most eggs generate 2-10 mv due to implosion)

From that 'point of perfect meeting' all waves EMERGE SORTED..

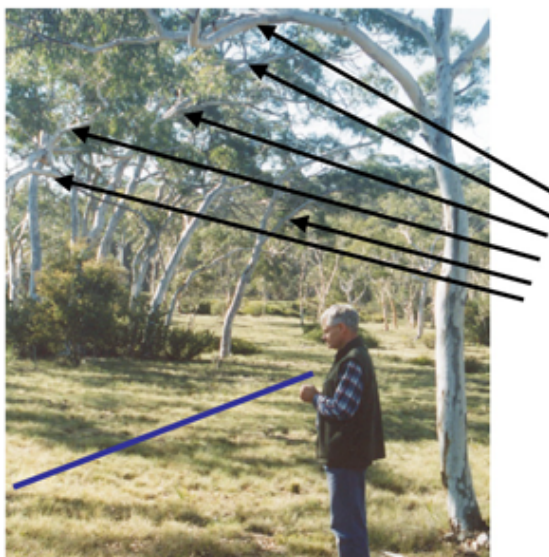
Only 'shareable' waves which can agree and get in phase survive..

This illustrates how implosion becomes the principle of sorting for waves in general.

In physics - this principle is called 'fusion' and 'phase conjugation'.

So how DID the charge get compressed into the seed? Well - if we were to ask what creates the most COMPRESSION to a scientist - the answer is FRACTAL symmetry. Things whose inside are just like their outside (self-similar like fern trees and onions and pine cones kind of)- are by definition in science the only way to get INFINITE COMPRESSION. Perfect compression is a VERY KOOL thing - because perfect compression MAKES NO HEAT! We are going to get into a nice word for this - IMPLOSION - which is opposite to EXPLOSION.

## Trees as Field Indicators for SHAPE of the Charge Field



Tree limbs can bend into the fracture path —

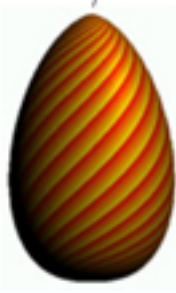
*Plants Follow the SHAPE of the Ambient Field Effect Of CHARGE..*





Implosion Zero Point  
Pine Cone PHIRE of life

Thru this  
IMPLOSION  
Or ZERO  
Point  
ONLY  
The  
SHAREABLE  
Or ABLE TO  
GET IN  
PHASE  
WAVES  
SURVIVE..



How IMPLOSION /  
FUSION .. SORTS...



Surviving this Charge Compression  
In DNA is the Key  
to Successful Dying

'Ethereic Formative Forces' (Steiner) are electrically described as Symmetry lines (Projective Geometry) which allow (Capacitive) CHARGE - to unpack as wave- constructively into Space.

Their self-organization by Implosive Compression - is called  
Conscious Self-Awareness  
(Symmetrically -from the Vedas: Ability to Self Refer..)



The Steiner student accurately visualizes a sequence of time lapse drawings of a bulb becoming a flower.

- . The room FILLS with a *love growth urge* in all present there.
- Then the same student accurately visualizes that rose stepping toward wilt and death -and the feeling in the room changes dramatically.
- Learn the sequence of symmetry turns in principle to CREATE.
- 'Projective Geometry' maps constructive wave interference paths - a good way to check where to dream or die from.
- The place of power uses symmetry knowledge to gain leverage on spin.



Recursive Heterodyning  
Is the Constructive Wave  
Interference Which  
Produces Implosion /  
Self-Organization

Waves must BOTH Add & Multiply in order

to produce  
only  
**CONSTRUCTIVE**  
interference.

Golden Ratio

.618 series & recursive heterodyning

Varying the tilt angle (here, into and out of the plane of this paper) of the vortex cascade or "light cone" which the heart's vortical muscle was impedance coupling, would determine this critical RATIO between adjacent nested fields. And by this ratio, the geometric efficiency of the fields ability to couple and continue their cascade bringing information between large fields like planet gravity bodies, to glands, and into cells and DNA.

.618...

Add 2

1.0

To get

1.618..

The next

OR

2.618..

Multiply

..

Any one

Number

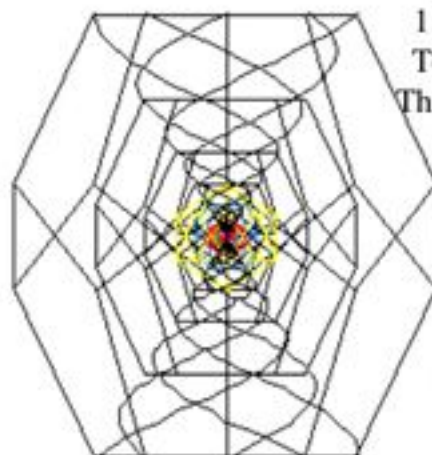
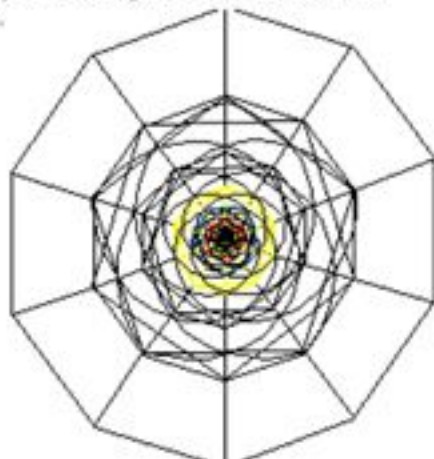
Times

1.618..

To get

The next.

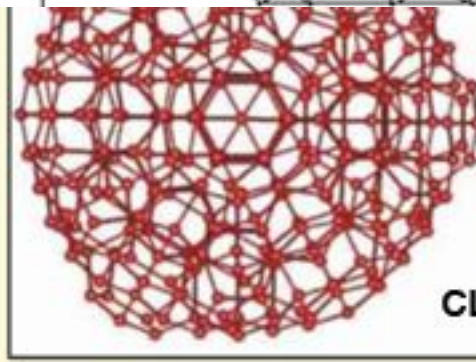
Here  
Is where  
Compression  
Becomes  
Acceleration..  
'squirting'  
Thru the  
Speed of  
light



Water  
Molecules  
Form  
Dodeca  
In their  
Most  
Perfected  
Charge  
Compressing



deca  
view

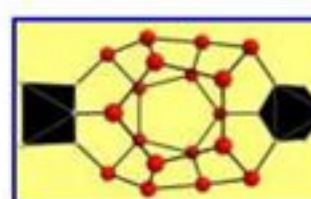
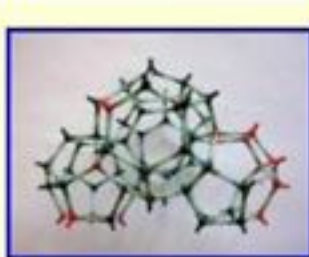
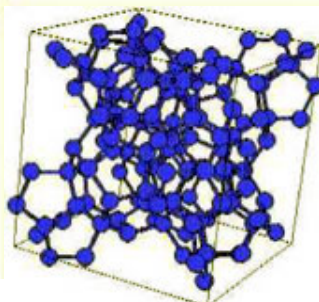
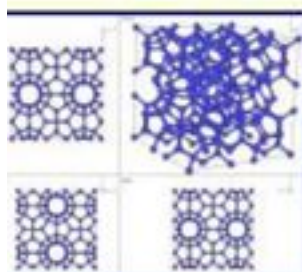
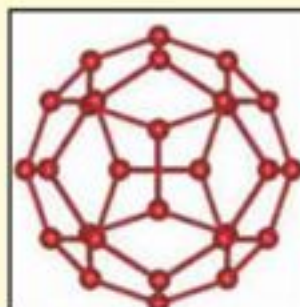
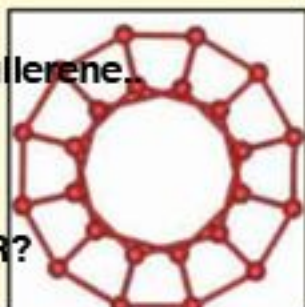


The  
Famous  
CLATHRATE  
CAGE  
for  
Water  
Molecules  
Is  
A  
Pent-  
Dodeca-  
Hedron

only four 14-molecule water tetrahedra arranged und the clathrate-I cavity, given below. Only the i oxygen atoms are shown.

Twenty-eight 14-molecule water tetrahedra arranged around the clathrate-II cavity, given below. Only the 392 oxygen atoms are shown.

a Bucky  
like  
Buckminsterfullerene.  
for Water..  
A  
CHARGE  
COMPRESSOR?





**Water - like DNA - can perhaps best be understood -from pure symmetry terms - as a device to permit the successful compression of electrical charge. The result of charge compression is the information density we call LIFE. To complete compression successfully - nature uses what every mathematician knows is the ONLY geometry for infinite or perfected - compression: FRACTALITY (self similarity). Golden Mean ratio is the essential dynamic of all PLANT SYMMETRY (phyllotaxis) - and the basis of the FIVE SIDED - PENT nesting in GOLDEN MEAN RATIO - which is the shape (5 sided) of most every living protein. The KEY connection - is understanding WHY Golden Mean ratio is the KEY to compression. This is because Golden Mean ratio is the key to self-similarity - which IS the key to compression.**

When you arrange charge waves into a FRACTAL

- by inviting such efficient COMPRESSION - you actually SUCK IN CHARGE! This 'IMPLOSION' is key to LIFE .... because...

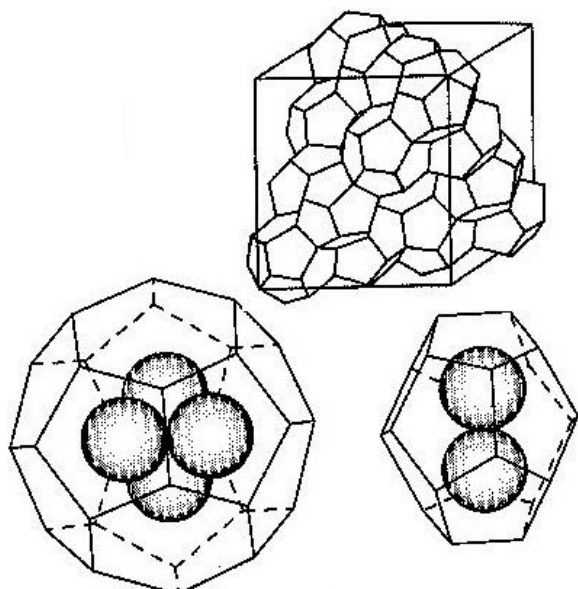
LIFE is possible where the most charge waves agree... because...

Information is most available where most charge waves agree... because...

Charge waves can most agree to meet - only where COMPRESSION (Implosion) is perfect.

SO - if you get compression perfect - you get LIFE - because you arrange waves to suck in and store electric charge.

So - what IS the perfect symmetry to make charge waves compress? In water - and in seeds?



**Figure 1.** (Top) sII crystal structure consisting of large and small cages. (Bottom left) A tetrahedral cluster of four hydrogen molecules in a large cage. (Bottom right) A cluster of two hydrogen molecules in a small cage.

Science has noted that the effective structures in water - to best create storage of life and life processes are DODECAHEDRAL. This has come to be known as THE CLATHRATE CAGE: pics below. Note that this relates to the Golden Mean ratio arrangement of WATER molecules in a MICROTUBULE - more below. (for example - Pat Flanagan told to me that tucking monoatomic hydrogen into an implosive clathrate cage dodecahedron of water molecules was the key to his MICROHYDRIN -free radical scavenger - invention.)

**PERFECT SUPER COHERENCE**

Primordial Water Crystal ...

(image opposite) **THE CLATHRATE CAGE - DODECAHEDRON and WATER:**

**IS THIS WATER'S ATTEMPT TO USE GOLDEN RATIO TO CREATE (Infinite non-destructive / implosive) COMPRESSION?**

The hypothesis we are testing by measuring charge harmonics for life force evaluation is:

**COULD THE ONSET OF RECURSION (DODECA or similar Compression Symmetries) be the SOURCE and key to what we are seeing in the cascades .. of charge harmonics ( soulinvitation.com/ biophoton life force measures) we are measuring in water?? This would then confirm the pattern we illustrate in the new book: "IMPLOSION: Secret Science of Ecstasy & Immortality" soulinvitation.com/ consciousskids**

We expect to be able to isolate (and optimize) the charge sources in the environment which contribute to the life force in the water - by looking at their harmonic signatures.

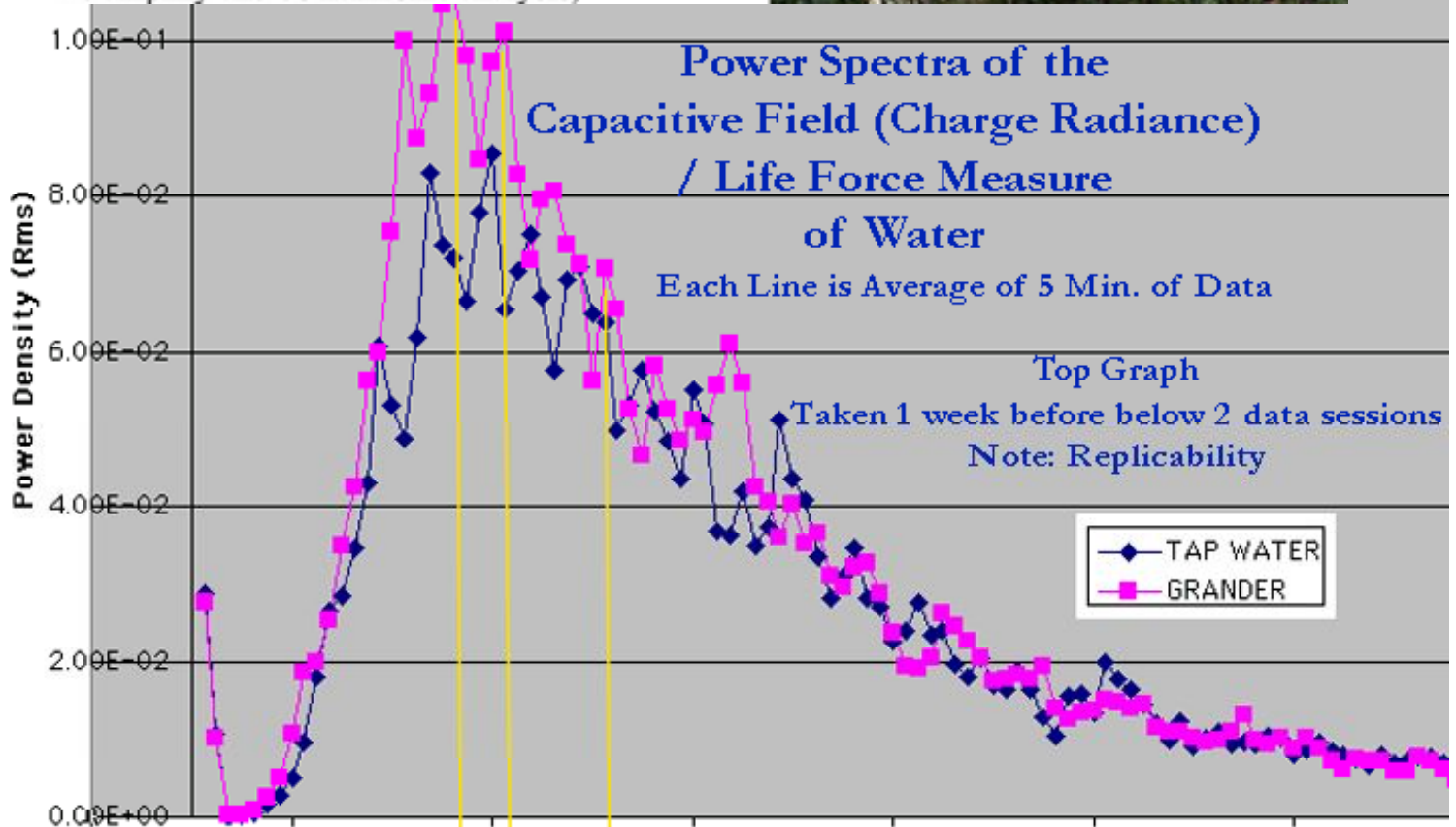
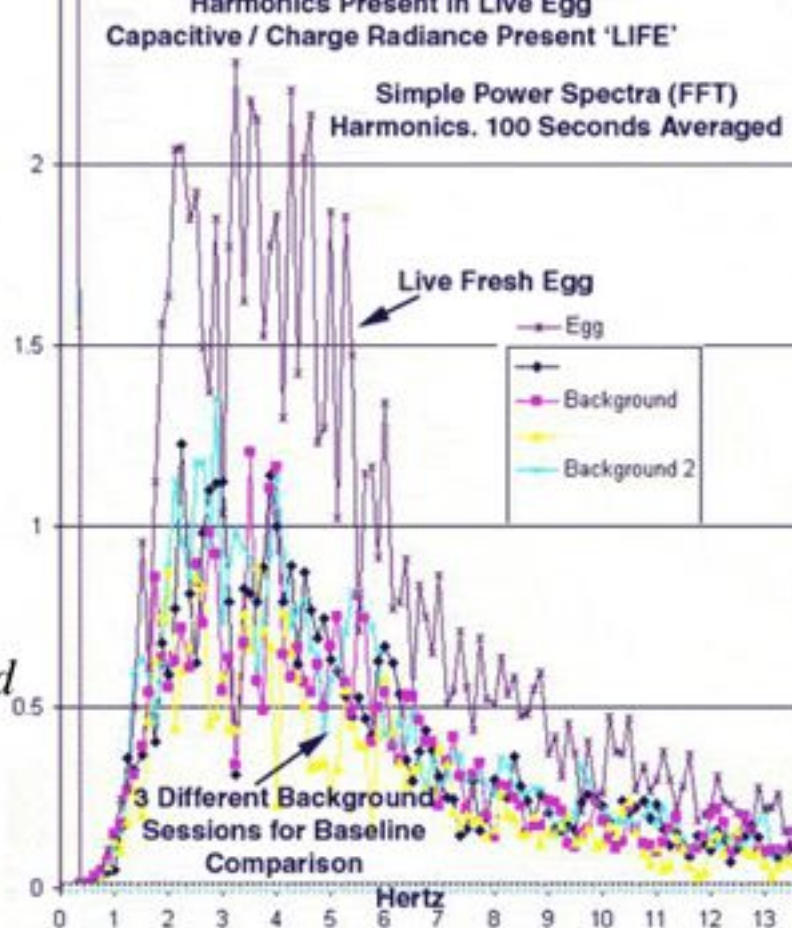
Like in the Heart (Heart Rate Variability) - the number of harmonics included predicts viability. (ref: soulinvitation.com/holarchy ). So - when we find the maximum number of harmonics included in a cascade of measured weak electric field- we know it is most alive! The simple principle is that perfect compression (of charge) is what allows the most harmonics ( +life information) to be contained. Finally- we present a few examples of measuring life force / vitality in water and food - by measuring charge (the weak electric field). ( more at soulinvitation.com/biophoton )



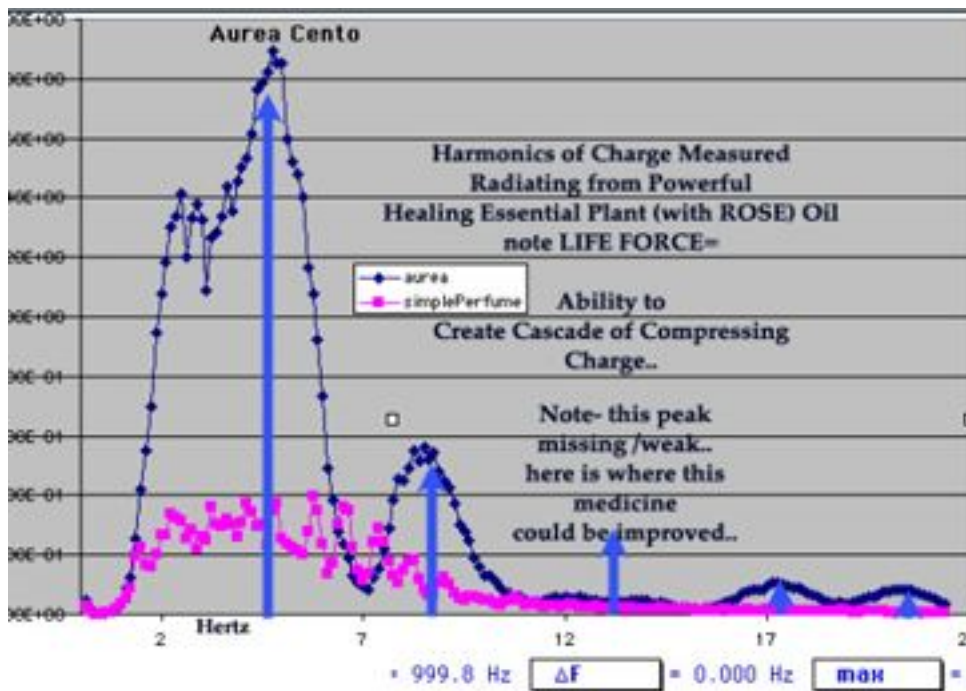
Harmonic Inclusiveness  
of Charge-  
capacitive pick up-  
simple Power Spectra..  
Quantifies EGG Life Force..

*Once Life is  
Understood  
In Electrical  
Terms-  
Then we can  
Sustain it-  
Because we understand  
its PRINCIPLE.  
(Fractal attraction  
of CHARGE)*

To measure that charge -  
The electric field created by  
FRESHNESS...  
We took a large ostrich egg,  
Cut it in half, coated the inside  
With GOLD - and used it as  
As 'spherical capacitor' / container  
And then measure the voltage generated  
In the weak field around the EGG  
(Using HeartTuner..  
We amplify and do harmonic analysis)



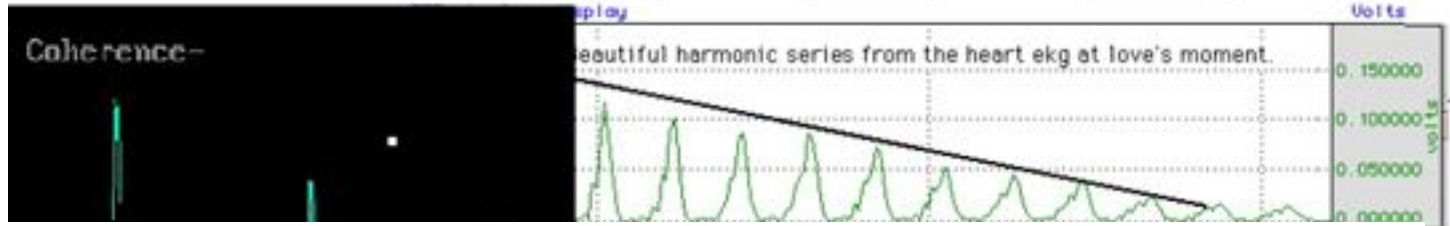




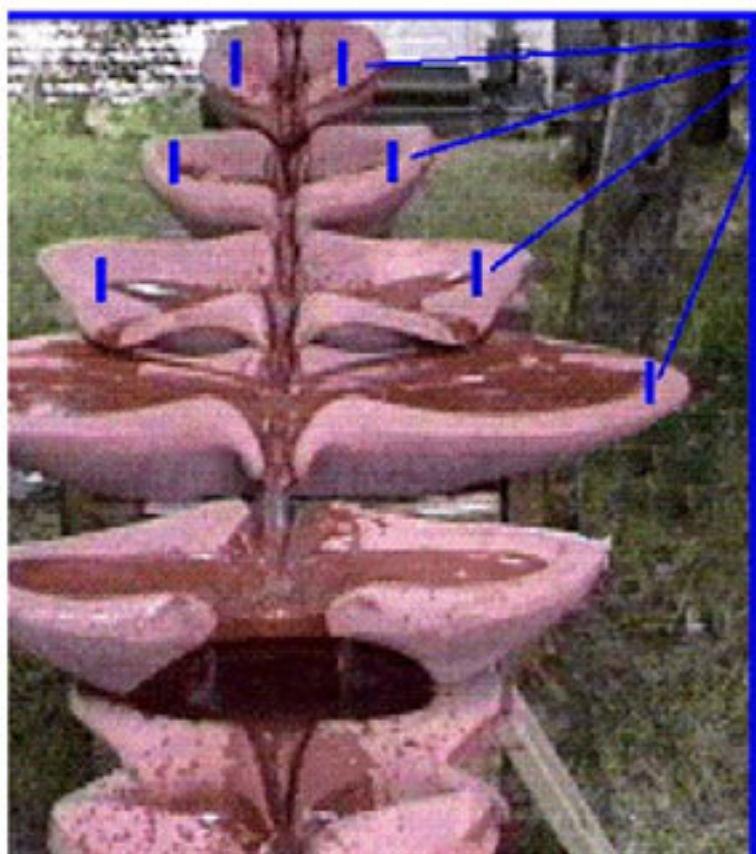
*Cascade of Harmonics  
Identifies LIFE FORCE  
.. And love..*



22:RRR #7; CH 1  
999.8 Hz ΔF = 0.000 Hz max = 0.0004672 Freq = 999.8 Hz



# 7 Fold Flowform



Golden Mean Spiral  
Golden Mean Ratio

A Coherent wave cascade, carries the  
thread of memory across scale, in ratio.



A Braid in the Waters, stores memory, helps seeds germinate, have water have the coherence to segregate solids..  
The healing of the waters... A Golden Path. The sacred ratio in the field of the flow's form weaves the memory of the long wave into the short wave of the water's molecules. This added spin coherence gives water the 'strength' to know self from not-self- create order from chaos